

LED Wrap Around Fixture

INSTRUCTION MANUAL

Read this instruction carefully before installation. Keep it for further reference. Make electrical and grounded connections in accordance with the national electrical code and any applicable code. Always turn off the power supply before installation. This product must be installed in accordance with the applicable installation code by a qualified electrician who is familiar with the construction and operation of the product and the hazards involved.

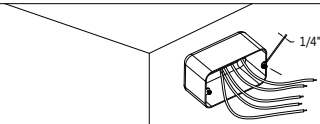
WARNING:

- ⚠ Risk of fire or electric shock. Fixture installation requires knowledge of luminaires electrical systems. If not qualified, DO NOT attempt installation. Contact a qualified electrician.
- ⚠ Risk of fire or electric shock. Suitable for damp locations. Always turn off the power supply before installation. Risk of fire or electric shock. Suitable for non-insulated surface and frame. DO NOT cover fixture with insulation liner or similar material.
- ⚠ DO NOT install fixture on unstable, loose or easily breakable surface. DO NOT exert force on the surface of the fixture.

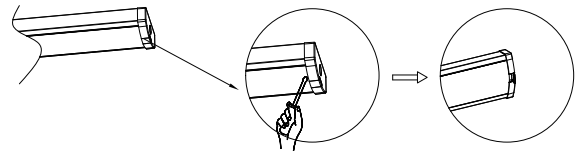
Installation Instructions

Junction-box Installation

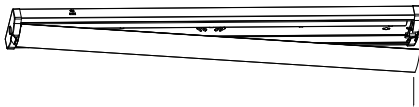
Step 1: Get the screws(not supplied) into the junction box and reserve 1/4" outside.



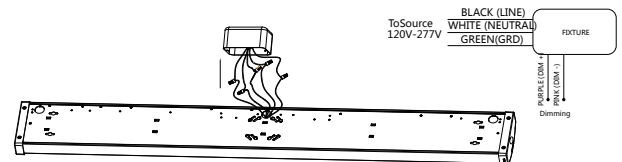
Step 2: Use the screwdriver to open the buckle at the end cap of both sides.



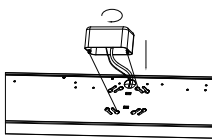
Step 3: Take out the Lens and peer off the protective film on the Lens.



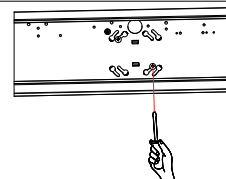
Step 4: Make the wiring according to below figure and use the provided cable ties to organize the cables and put them into the junction box.



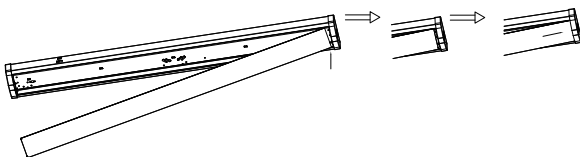
Step 5: Align the screws on the junction box to the back shell of fixture, so that the junction box is attached to the back shell and then rotate clockwise.



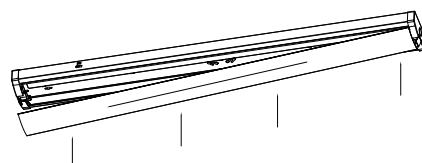
Step 6: Tighten the screws on the front of the fixture back shell to complete the assembly of the junction box.



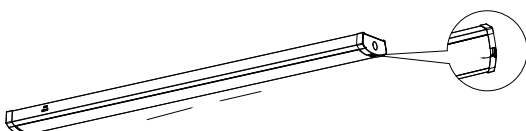
Step 7: Embed one terminal of lens to one end cap first, then embed other terminal to other end cap, push one terminal into the end cap.



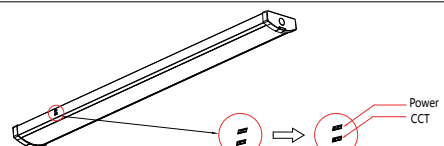
Step 8: Put the Lens into the slot of the back shell from one side to the other, check the Lens if assembled in place.



Step 9: Close the buckle on the end cap, and adjust the Len to the middle position without gaps at both ends.

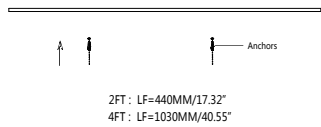


Step 10: Select the desired color temperature and power.

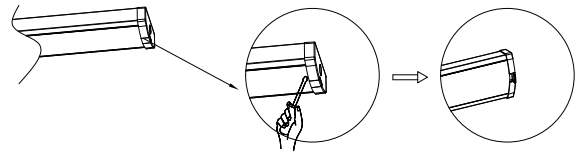


Surface-mounting Installation

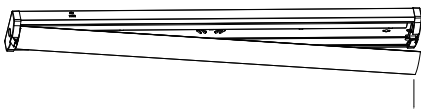
Step 1: Drill 4 holes in the ceiling as figure; insert the anchor into each hole (Distance of holes as shown in figure).



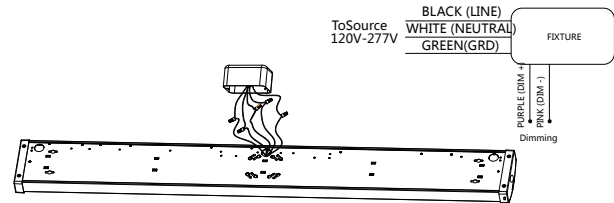
Step 2: Use the screwdriver to open the buckle at the end cap of both sides.



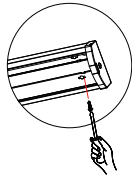
Step 3: Take out the Lens and peel off the protective film on the Lens.



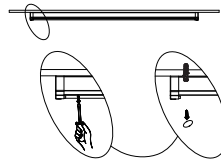
Step 4: Make the wiring according to below figure and use the provided cable ties to organize the cables and put them into the junction box.



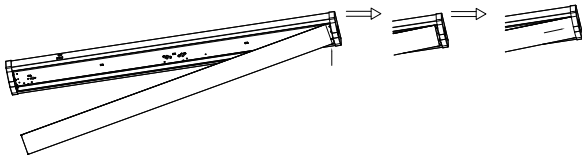
Step 5: Screw the fixture back shell to the ceiling (screws provided).



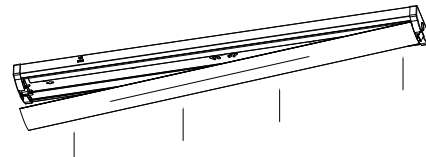
Step 6: Tighten the screws to complete back shell installation.



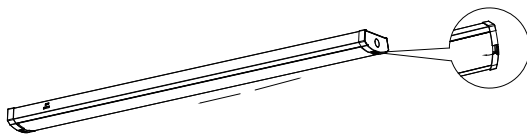
Step 7: Embed one terminal of lens to one end cap first, then embed other terminal to other end cap, push one terminal into the end cap.



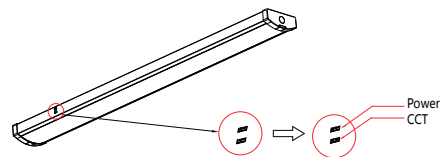
Step 8: Put the Lens into the slot of the back shell from one side the other, check the Lens if assembled in place.



Step 9: Close the buckle on the end cap, and adjust the Len to the middle position without gaps at both ends.



Step 10: Select the desired color temperature and power.



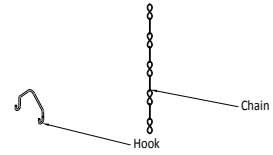
Pendant Chain Installation

Step 1: Install the main hooks according to the spacing shown in figure (Main hooks are not provided).

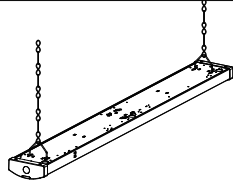


2FT : LF=440MM/17.32"
4FT : LF=1030MM/40.55"

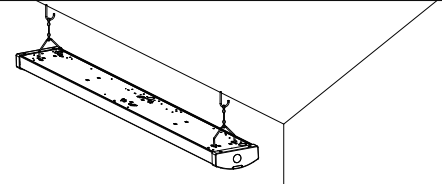
Step 2: Take the fixture hooks and hanging chain from the accessory bag.



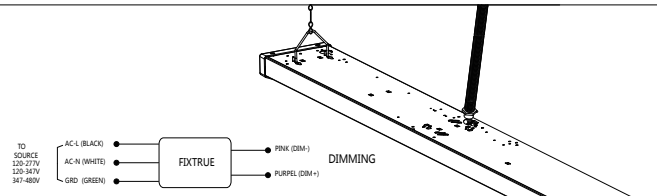
Step 3: Put the hanging chain into the fixture hook, get the hook into the fixture back shell as shown in figure.



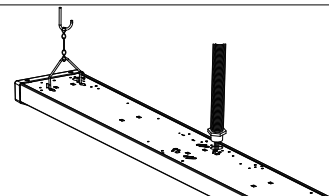
Step 4: Hook the chains into the ceiling main hooks.



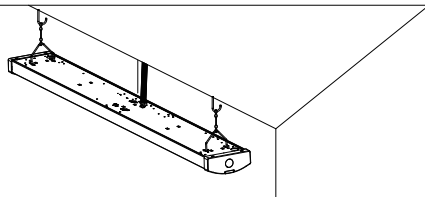
Step 5: Make the wiring as bellow diagram.



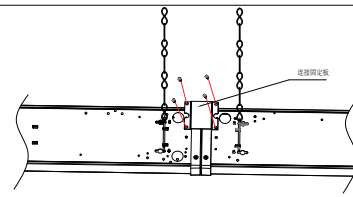
Step 6: Get the wire connecting terminals inside of back shell.



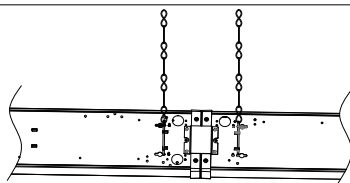
Step 7: Install the wire tube into the fixture housing and tear off the protective film on the Lens.



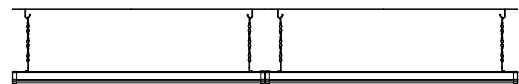
Step 8: Place the connection fixing plate in the position corresponding to the screw hole (screws provided).



Step 9: Fasten the back shell and the connection fixing plate with screws.



Step 10: Installation is complete.



Step 11: Select the required color temperature and power.

